

COOPERATE

COOrdinating and Piloting actions towards ERA-hubs as inTer- and intraregional Ecosystems for knowledge production



Building up research & innovation ecosystems to improve regional and national excellence and competitiveness.

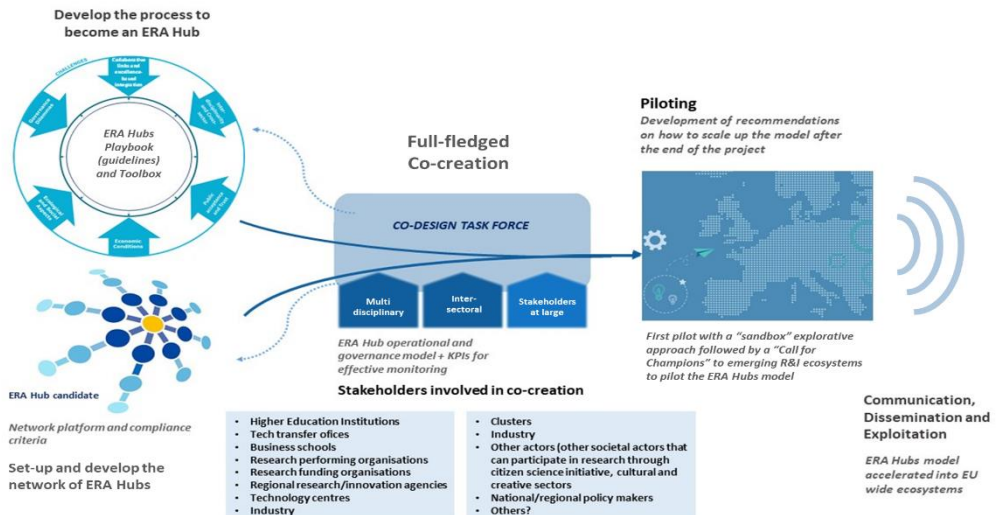


ERA Hubs

ERA hubs are a spearhead in the European Commission’s strategy to boost regional innovation in the European Research Area (ERA). Their aim is to help regions play a greater part in the coordination of R&D policies and investments in member states. The ERA Hubs could support organizations – and people – to bring together different stakeholders, join up public and private spheres and break existing silos.

Objective

COOPERATE’s overall objective is to develop and pilot the ERA Hub concept based on the vision and success stories developed within the EuroTech Universities Alliance and their R&I ecosystems. COOPERATE aims to facilitate the harmonisation of research practices and sharing of best practices across member states, promoting a more seamless and efficient research environment within the ERA Hubs network.



COOPERATE

COOrdinating and Piloting actions towards ERA-hubs as inTer- and intraregional Ecosystems for knowledge production



Seven key areas



To aid ecosystem players, such as educational institutions, local industry, policymakers and other stakeholders, COOPERATE offers a Playbook and a Toolbox. Its overarching aim is to provide a framework for nurturing dynamic ecosystems that stimulate research excellence, attract and retain top talent, facilitate knowledge transfer, foster collaboration among diverse actors, secure adequate funding, establish effective governance structures, and foster a culture of innovation. The Playbook contains a guide that provides recommendations for the development of thriving ecosystems within these seven key areas: Research, Talent, Knowledge Transfer, Collaboration, Funding, Governance, and Innovation. Based on these seven areas, the Toolbox offers tools that can be employed in the ecosystem to develop regional excellence and competitiveness.

Piloting phase

The development of the ERA Hub concept and framework is a iterative process that aims to incorporate the evolving nature of research & innovation ecosystems. The COOPERATE project aims to implement the framework in the piloting phase in Prague, where mutual learning is fostered to ground the ERA Hub concept. The ERA Hub Framework process approach, aligned with COOPERATE's overall approach, is a dynamic and iterative process that involves defining and joining ERA Hubs. This process of (re)defining the ERA Hub concept, initially within COOPERATE but with room for future improvements based on insights from new ecosystems interested in joining with the intention of becoming ERA hubs. The inner process involves continuous updates to ensure its alignment with relevant standards. The outer process focuses on the transformation of regional R&I ecosystems into ERA Hubs, utilizing the Playbook, Toolbox, and Platform. These two processes are interconnected through the ongoing comparison between the concept's criteria and the aspiring ERA Hub's attributes. This allows for improvements to the concept based on the piloting phase that will initially be held in the ecosystem of Prague.

Consortium Partners



Funded by
the European Union

For more information visit [linkedin.com/company/cooperateeurope](https://www.linkedin.com/company/cooperateeurope) up or www.cooperate-project.eu and sign up for the newsletter.

